



TEACHING OF ENGLISH TO FOREIGNERS

Commentary

In the course of last year 35,506 foreign students of English participated in one of the English language courses that were organized by the 29 English language schools then in operation. This signified an increase of 4,401 or 14.1 per cent over the previous year.

The number of German students, accounting for 38.4 per cent of the total foreign English language students, went up by 1,365 or 11.1 per cent to 13,626 from 12,261 in the previous year. Other increases in foreign English language students were recorded from, amongst others, France (+1,189), Austria (+567) and a group of "other" (1,902) countries. At the same time, drops in foreign student intakes were registered from, amongst others, Russia (468) and Italy (-154).

In 1999, female students accounted for 58.8 per cent of all foreign English language students. Some 22,741 students or 64.0 per cent of all foreign students were up to 25 years of age.

In the course of last year, the English language institutions employed 1,001 persons; up by 231 over the previous year. Most of the employees, or 943, were engaged on a part-time basis. The remaining 58 were employed on a full-time basis. Moreover, women accounted for around 75 per cent of all employment with these English language institutions.

Table 1. Comparative Figures 1997 - 1999

Country	1997	% of Year Total	1998	% of Year Total	1999	% of Year Total
Germany	13328	43.2	12261	39.4	13626	38.4
Italy	6245	20.3	6316	20.3	6162	17.4
France	3472	11.3	3451	11.1	4640	13.1
Russia	1871	6.1	1976	6.4	1508	4.2
Austria	1499	4.8	2055	6.6	2622	7.4
Others	4399	14.3	5046	16.2	6948	19.5
Total	30814	100.0	31105	100.0	35506	100.0



Kindly indicate source when quoting from this release

Library and Information Unit - Lascaris, Valletta CMR 02, Malta Tel: (+356) 239225/251360 Fax: (+356) 249841 e-mail: COS@magnet.mt <http://www.magnet.mt/home/cos>

Table 2. Foreign students following courses in specialised schools for English Language classified by Country, Age-Group and Sex: January/December 1999

Country of Origin	Age										Total		
	15 & Under		16 - 20		21 - 25		26 - 30		31 & over				
	m	f	m	f	m	f	m	f	m	f	m	f	t
Total	1134	1582	4458	7748	3117	4702	2622	3151	3290	3702	14621	20885	35506
Austria	43	35	674	1342	111	149	56	64	68	80	952	1670	2622
Belgium	-	-	21	53	32	31	24	21	11	22	88	127	215
China	1	1	11	14	12	12	1	5	3	3	28	35	63
Czech Republic	8	7	29	48	37	117	46	38	17	30	137	240	377
Denmark	5	6	7	23	5	11	2	13	1	4	20	57	77
Finland	-	7	40	144	7	9	2	8	22	20	71	188	259
France	92	137	693	1328	388	517	523	517	205	240	1901	2739	4640
Germany	531	847	1065	1745	1133	1625	1101	1358	2064	2157	5894	7732	13626
Hungary	7	4	12	10	8	13	4	5	10	9	41	41	82
Italy	130	181	991	1361	596	864	376	561	469	633	2562	3600	6162
Japan	4	9	23	53	53	144	23	73	25	36	128	315	443
Libya	16	10	23	24	54	16	42	10	19	6	154	66	220
Netherlands	3	8	28	68	22	38	31	34	16	28	100	176	276
Norway	4	2	64	166	5	8	7	7	-	9	80	192	272
Poland	19	31	117	236	75	113	30	35	57	57	298	472	770
Russia	181	170	170	236	122	227	117	128	66	91	656	852	1508
Slovakia	7	15	21	36	19	35	18	28	30	32	95	146	241
Slovenia	4	7	6	21	7	14	11	13	17	17	45	72	117
Spain	10	17	10	27	42	53	33	47	19	31	114	175	289
Sweden	15	18	204	484	41	199	15	13	16	19	291	733	1024
Switzerland	19	32	106	163	179	303	108	97	103	128	515	723	1238
Turkey	3	6	28	17	26	25	16	18	15	12	88	78	166
Ukraine	2	-	23	16	4	5	-	-	-	-	29	21	50
Other	30	32	92	133	139	174	36	58	37	38	334	435	769

Chart 1. Total foreign student intake for the period: January/December 1994 -1999

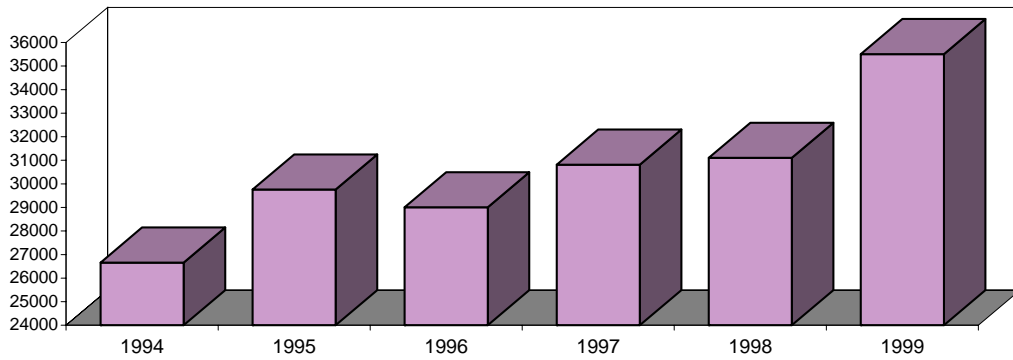


Chart 2. Student population by age-group: 1998 - 1999

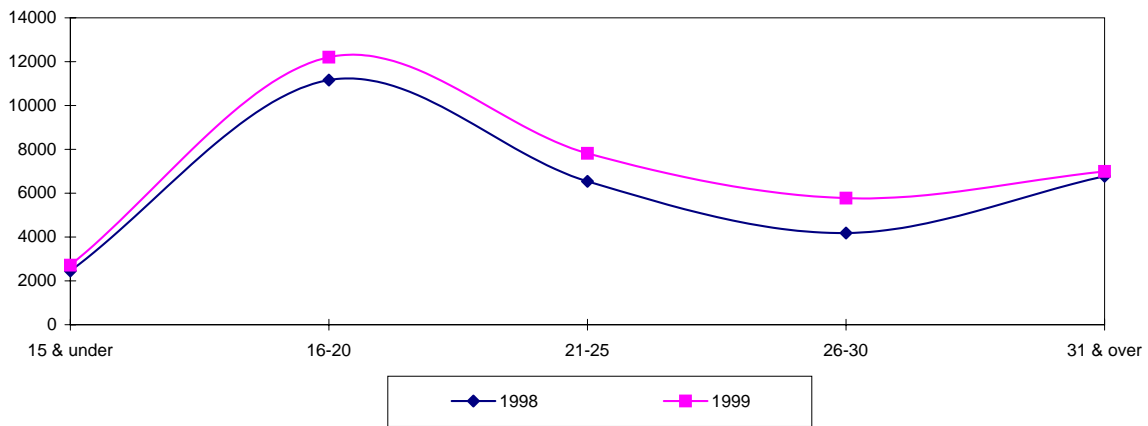


Chart 3. Countries having the highest number of students: January/December 1998 - 1999

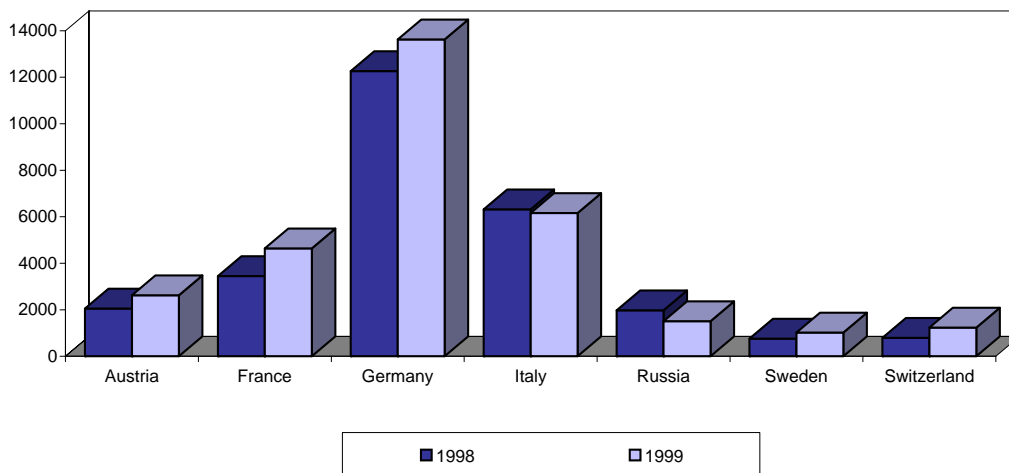


Chart 4. Female student population compared to male student population by age-group: 1999

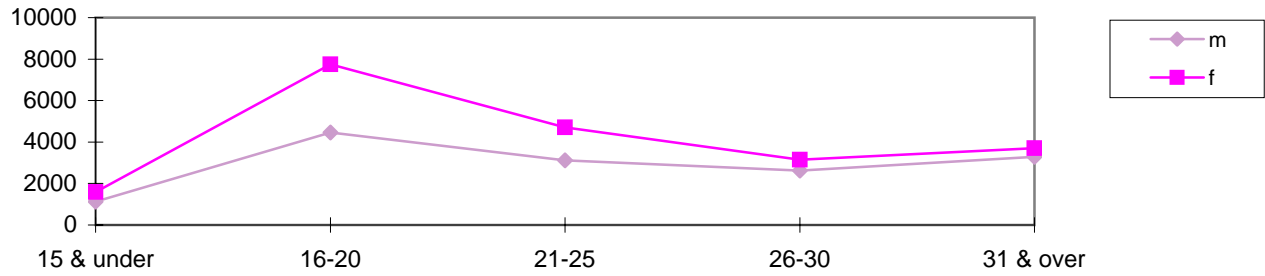


Chart 5. Foreign students as percentage of tourist arrivals: 1999

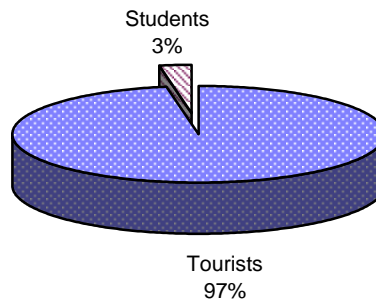


Table 3. Staff engaged in the teaching of English Language to Foreign Students classified by sex: 1999

<i>Full-time</i>			<i>Part-time</i>			<i>Total</i>			Total Institutes
<i>m</i>	<i>f</i>	<i>t</i>	<i>m</i>	<i>f</i>	<i>t</i>	<i>m</i>	<i>f</i>	<i>t</i>	
12	46	58	248	695	943	260	741	1001	29

Chart 6. Teaching Staff

